

Managed Personal Remote Access for High Assurance Networks

The AEP Series E DRemote secures personal remote access communications to CESG Enhanced Grade standard, and has been second-party evaluated and approved by the Council of the European Union Security Committee (INFOSEC) for levels up to and including CONFIDENTIAL UE (EU Confidential). Using DRemote, an organisation can enable its mobile workforce to access sensitive data over the Internet at costs previously associated with commercial remote access. The Series E DRemote benefits from the AEP Management System, taking advantage of the proven key and device management features utilised by AEP's Series E products. DRemote provides a highly scalable solution with flexible configuration options, allowing organisations to maximise their Return On Investment (ROI) as their business needs evolve.

Remote Working

Government policy requires public sector organisations to offer home and mobile working to their workforce wherever possible. These bodies can now extend remote access to Classified data over a range of network access technologies including remote office LAN, broadband (over DSL or cable), and Ethernet-enabled WiFi, without the normal restrictions and overhead costs. DRemote delivers the throughput to satisfy a wide range of demanding applications, including VoIP and Video over IP.

Integrates with AEP Series E Gateway Encryptors

The AEP DRemote works seamlessly with existing AEP encryptor deployments. A unique 'tunnel routing' feature transparently enables authorised remote users to access resources on Series E secured intranets and extranets.

Deployment Options

The Series E DRemote connects via an AEP encryptor in concentrator mode. It can be deployed as a stand-alone solution for remote access, or as a remote access adjunct to an existing AEP Series E secured network. Communications continuity and disaster recovery options are available.

High Assurance Standards

The Series E DRemote provides secure personal remote access communications; it is approved to assure data confidentiality to national security standards across public networks such as the internet and as a dedicated ethernet device, it eliminates the security issues inherent in software or PC-integrated design (e.g. PCMCIA card)



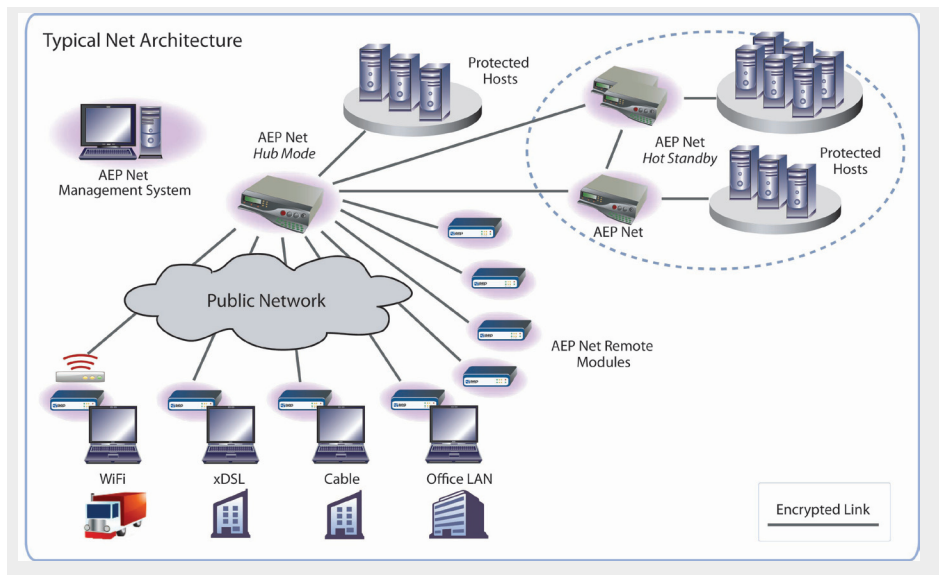
Ease of Deployment and Management

The proven AEP Management System has been extended to provide unparalleled scalability of security policy and key management for a remote security device. Purpose designed to facilitate rapid rollout and system evolution, the AEP Management System enables user communities of all sizes to be managed from the network centre.

Features include:

- Fully automated keying; no CESG key material at remote site
- Assured cryptographic separation of user communities
- Compromise control; cryptographic isolation of a suspect unit giving instant "stun" and "kill" capability in the event of compromise or loss
- No need to return units to a central site for key updates

The modular design allows operation and management by either the customer or a managed service provider and the fully automated key management eliminates most of the administration costs traditionally associated with such systems. Unique functionality enables Managed Service Providers to offer secure access solutions for complex user communities, including inter-operation projects



Key Features		Technical Specifications																										
<p>Series E DRemote</p> <ul style="list-style-type: none"> ▶ Portable IPsec-based data security module for remote access ▶ Provides cryptographic separation of private and public networks ▶ Dedicated Ethernet device supports 10/100 Base-T ▶ Algorithm variants available to protect Classified data to government standard ▶ Sophisticated tamper proofing and compromise control ▶ Continuous output monitoring for cryptographic integrity assurance ▶ Continuous random number generation checks ▶ Self-test health check on power-up ▶ Automatic traffic key management using ISAKMP <p>Management</p> <ul style="list-style-type: none"> ▶ AEP Series E Management System enforces security policy and provides encryptor administration and key management ▶ AEP Series E DRemote and AEP Series E devices supported by single AEP Management System ▶ Highly scalable – capacity for in excess of 50,000 users ▶ PKI authentication – using assured CA and AEP Net Keyper HSM ▶ Digitally signed certificate requests (smart card-based initialization) ▶ Central control of X.509v3 certificate issuance, suspension and revocation ▶ Encryptor management cryptographically isolated from network traffic ▶ Both certificate and address-based Communities of Interest (COI) and Closed User Group (CUG) management, supporting hub and spoke, fully meshed and partially meshed deployments ▶ No requirement for user to return the unit to a central site for key updates ▶ Units can be re-keyed from the network center in the event of security compromise ▶ Secure audit and accounting <p>Network Integration</p> <ul style="list-style-type: none"> ▶ 10/100 Base-T public and private Ethernet interfaces ▶ Concentrator side failover provides disaster recovery and maximises business continuity ▶ Quality of Service (QoS) marker pass through ▶ Public and private interface routing ▶ Central connection via one or more AEP Series E devices in concentrator mode 		<p>Performance</p> <table border="1"> <tr> <td>Sustained encrypted traffic throughput †</td> <td colspan="2">18 Mbps</td> </tr> <tr> <td rowspan="2">Remote access users per concentrator</td> <td>20M Concentrator</td> <td>100 (10 concurrent)</td> </tr> <tr> <td>100M Concentrator</td> <td>1000 (100 concurrent)</td> </tr> </table> <p>Network Interfaces</p> <table border="1"> <tr> <td>WAN</td> <td>10/100 Base-T Ethernet autonegotiation (N-way)</td> </tr> <tr> <td>LAN</td> <td>10/100 Base-T Ethernet autonegotiation (N-way)</td> </tr> </table> <p>Environmental</p> <table border="1"> <tr> <td rowspan="2">Temperature</td> <td>Storage when installed, Operating: 5°C (41°F) to 40°C (104°F)</td> </tr> <tr> <td>Storage: -15°C (5°F) to 65°C (149°F)</td> </tr> <tr> <td>Humidity</td> <td>25% - 90% non-condensing</td> </tr> </table> <p>Physical Dimensions</p> <table border="1"> <tr> <td>Height</td> <td>28mm (1.1 in)</td> </tr> <tr> <td>Width</td> <td>118mm (4.65 in)</td> </tr> <tr> <td>Depth</td> <td>195mm (7.68 in)</td> </tr> <tr> <td>Weight</td> <td>0.8 Kg (.18 lbs) including power supply</td> </tr> </table> <p>Power</p> <p>100V to 240V, 50-60 Hz auto-sensing external in-line mains AC to DC converter, 28VA maximum</p> <p>Electrical Safety</p> <p>EN 60950: 1992/A1:1997 IEC 950:1991/A4:1996 + All CB Countries. CSA C22.2 No 950 UL 1950: 1995/Amended 1998 UL 60950/CSA 60950 AS/NZS 3260:1993/A4:1997</p> <p>EMC</p> <p>EN 55024:1998/A1:2001 (Measured as per: IEC 61000-4-2:1995, IEC 61000-4-3:1995, IEC 61000-4-4:1995, IEC 61000-4-5:1995, IEC 61000-4-6:1995, IEC 61000-4-8:1995, IEC 61000-4-11:1995.) EN 61000-3-2:2000 EN 61000-3-3:1995/A1:2001 European Standard 55022:1994/A1:1995/A2:1997 Class B. CFR 47, Part 15 Class B. (FCC)</p> <p>MTBF</p> <p>50,000 hrs based on British Telecom HRD5 standard</p>		Sustained encrypted traffic throughput †	18 Mbps		Remote access users per concentrator	20M Concentrator	100 (10 concurrent)	100M Concentrator	1000 (100 concurrent)	WAN	10/100 Base-T Ethernet autonegotiation (N-way)	LAN	10/100 Base-T Ethernet autonegotiation (N-way)	Temperature	Storage when installed, Operating: 5°C (41°F) to 40°C (104°F)	Storage: -15°C (5°F) to 65°C (149°F)	Humidity	25% - 90% non-condensing	Height	28mm (1.1 in)	Width	118mm (4.65 in)	Depth	195mm (7.68 in)	Weight	0.8 Kg (.18 lbs) including power supply
Sustained encrypted traffic throughput †	18 Mbps																											
Remote access users per concentrator	20M Concentrator	100 (10 concurrent)																										
	100M Concentrator	1000 (100 concurrent)																										
WAN	10/100 Base-T Ethernet autonegotiation (N-way)																											
LAN	10/100 Base-T Ethernet autonegotiation (N-way)																											
Temperature	Storage when installed, Operating: 5°C (41°F) to 40°C (104°F)																											
	Storage: -15°C (5°F) to 65°C (149°F)																											
Humidity	25% - 90% non-condensing																											
Height	28mm (1.1 in)																											
Width	118mm (4.65 in)																											
Depth	195mm (7.68 in)																											
Weight	0.8 Kg (.18 lbs) including power supply																											

† Based on 1456 byte packets

Accreditation



United States

Toll-Free: +1-877-638-4552
Tel: +1-732-652-5200

Email: sales@aepnetworks.com Web: www.aepnetworks.com

Europe

Tel: +44 1344 637 300

Greater China

Tel: +8621 5116 7120

SE Asia, Singapore

Tel: +852 2961 4566

Australia/New Zealand

Tel: +61 2 9413 2282

Japan

Tel: +8180 5645 4503

Malaysia

Tel: +60 32166 2260